

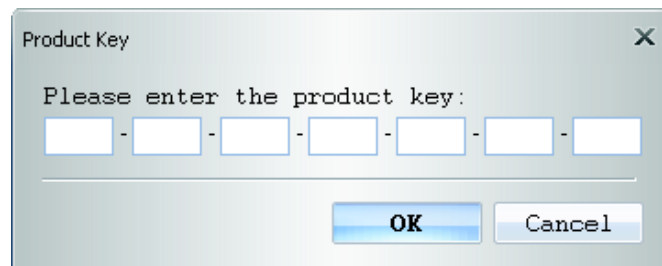
Contents

Read GPS Log From Device	3
Clear Data Logger Memory	4
Data Logger Configuration	5
Track List Window	7
Add Place Mark	8
Add Photos.....	9
Browse photos	10
GeoTag – Save GPS Information into Photos.....	10
Photo List Window	11
Upload Photos to Flickr	11
Shift Photo Time.....	12
Photo Comments.....	13
Media List View	13
Google Earth Viewing	14
Save As KMZ File.....	14
Altitude Graph.....	14
Speed graph	15
Track Editing.....	15
Save and Open Project	18
Time Zone Setting	18
Options	19

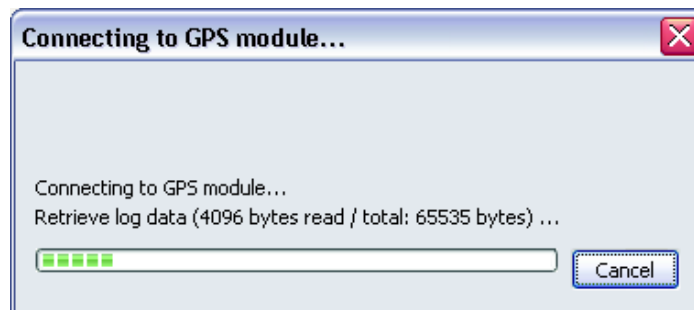
Read GPS Log From Device

Step 1 – Connect Data Logger to PC USB port. Please make sure the Data Logger power is turn on.

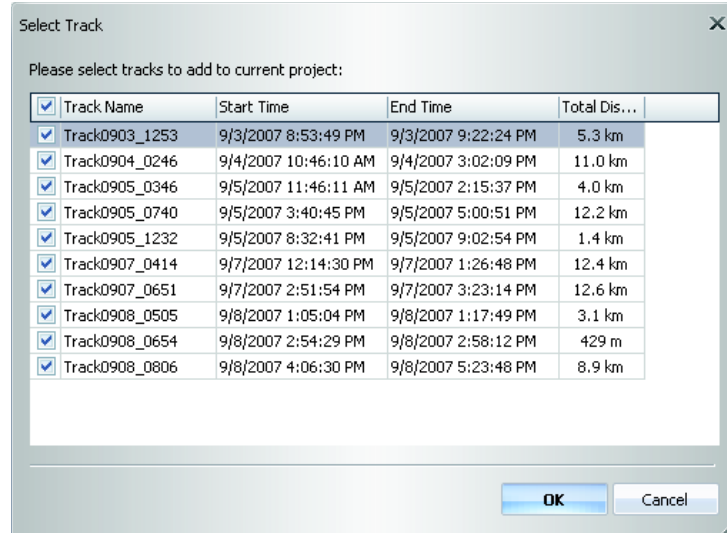
Step 2 – Menu command “File” -> “Read log...” Users have to input product key at the first time. The product key is on the cover of installation CD.



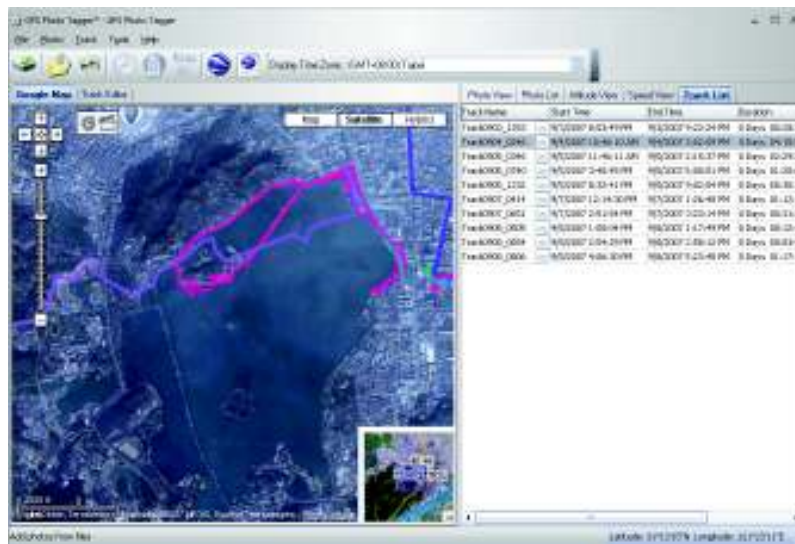
GPS Photo Tagger will automatically detect the port and baud rate and read in the GPS tracks.



A track list window will be popped up. Select the tracks to import.

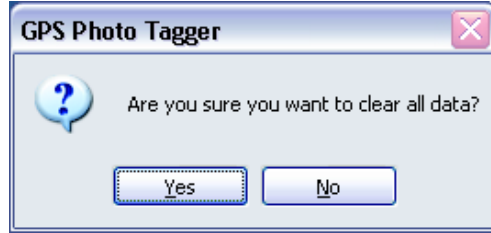


Tracks will be shown on the Google Map window.



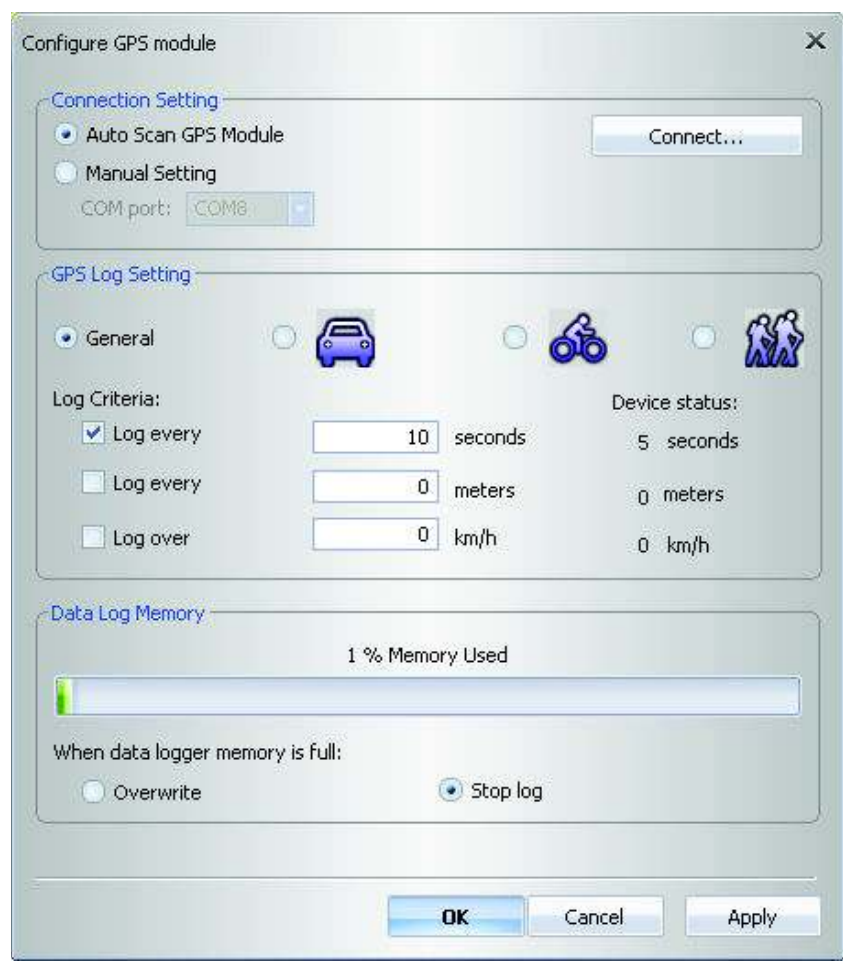
Clear Data Logger Memory

Menu command "File" -> "Clear log" will clear the data stored in device, so the device memory are enough for next usage.



Data Logger Configuration

Connect Data Logger to PC and **turn on Data Logger**. Menu command "File" -> "Config GPS..." If Data Logger is not connected, the GPS Log Setting area will be disabled. Please make sure the Data Logger power switch is turn on when connect.



Connection Setting:

Auto Scan GPS Module (Recommended)

The program will automatically detect the com port and the baud rate. It is recommended to set to auto scan.

Manual Setting

Users can also manually set the port and baud rate. Although it can speed up the initial connect time, but it is not recommended unless users understand the valid port and baud rate.

Reset Device

Reset the GPS device when the behavior is abnormal.

GPS Log Setting

There are 4 log modes: General mode, vehicle mode, cycling mode, and hiking mode. Users can also change the default setting of these 4 modes.

Log every () seconds:

Specify the log period. For example, if specify 3 seconds, the GPS device will log every 3 seconds.

Log every () meters:

Specify the log distance. For example, if specify 10 meters, the GPS device will log every 10 meters.

Log over () km/h:

Specify the log speed. For example, if specify 20 km/h, the GPS device will log when the speed is over 20 km/h.

Note: GPS device will log only when the log period, log distance, and log speed all meet the criteria.

Data Log Memory

A bar show how many percentage of memory is used in the Data Logger device. Users can use "Clear Log" to clear all the memory.

When data logger memory is full

Overwrite: Overwrite the earliest logged data.

Stop Log: Stop data logging.

Track List Window

Tracks are list on the top. Users can change the colors and line widths of tracks.

Press "Play" button, Google map window will animate the whole trip by moving the current position.

Check "Photo Slide Show" will show photo while animate trips.

Track Name	Color	Line Width
Track2008/01/20_12:47	Blue	5
Track2008/01/21_06:46	Magenta	5
Track2008/01/21_08:43	Black	5

Play Normal

0hr 00min 00sec

Photo Slide Show

Track properties:

Track Name	Track2008/01/20_12:47
Start Time	20.1.2008 12:47:47
End Time	20.1.2008 13:31:28
Duration	0 Days 00:43:41
Total Distance	948 m

Add Place Mark



To add a new place mark, please click on the blue balloon icon, and then click on the position of new place marker. The “Place Mark Property” dialog will be pop up for editing.

Users can manually add photos to the place mark, or delete photos from the place mark.

A screenshot of the 'Place Mark Property' dialog box. The dialog has a title bar with 'Place Mark Property' and a close button. It contains several sections: 'Name' with a text input field containing 'My PlaceMark'; 'GPS Info' with fields for 'Date/Time' (empty), 'Latitude' (24.750573°), 'Longitude' (121.090622°), and 'Altitude' (0 m); 'Photos' with a large empty area and two small icons (add and delete); and 'Description' with a large empty text area. At the bottom, there are 'OK' and 'Cancel' buttons.

Add Photos

Users can add photo from a file folder, or selected files.

Add photo from a folder: Menu command “Photo” -> “Add Photo...” -> “From Folder”. Select a folder to add photo.

Add photo from selected files: Menu command “Photo” -> “Add Photo...” -> “From Files”. Use Ctrl-Click, or Shift-Click to select multiple files.

The photo will show on the Photo View window. Users can add comments to each photo. Users can also rotate, delete photo.

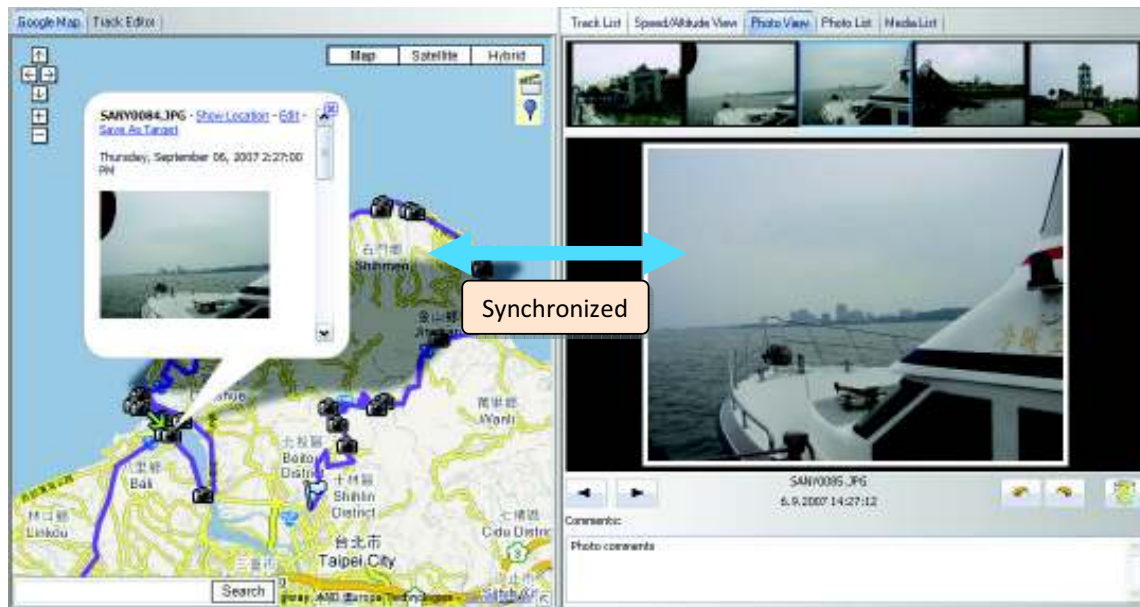


When photos are added, GPS Photo Tagger will automatically match photo and GPS logged waypoints by time. Place marks will be created as a placeholder for photos.

Browse photos

Click on the “next photo” and “prev photo” buttons to browse the photos.

Current photo and current place mark will be synchronized.



GeoTag – Save GPS Information into Photos

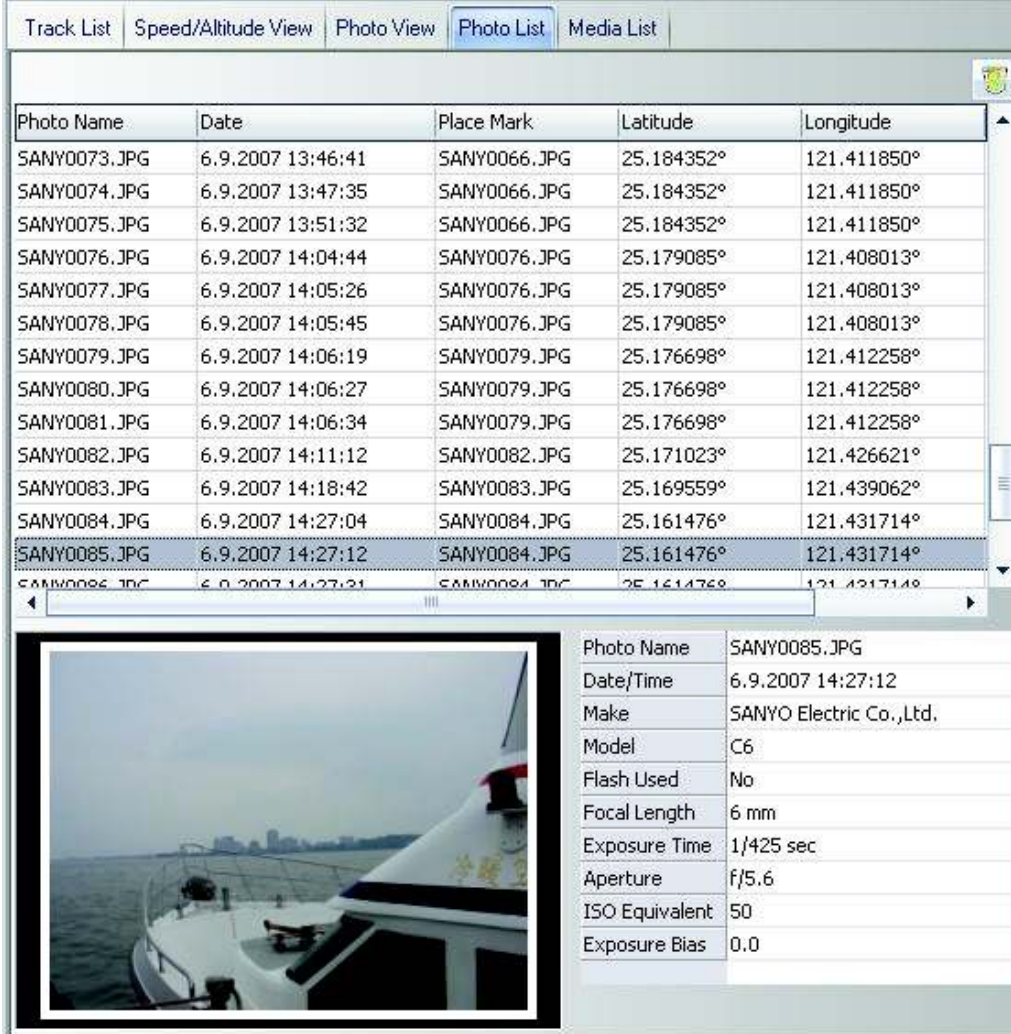
Menu command “Photo” -> “Write GPS info into photos” will save the latitude, longitude, and altitude into photo.

A progress window will show the writing progress.



Photo List Window

Photo list window will show the attributes of photos. The information includes “file name”, “date”, “place mark”, “latitude”, “longitude”, and “Geotagged flag”.



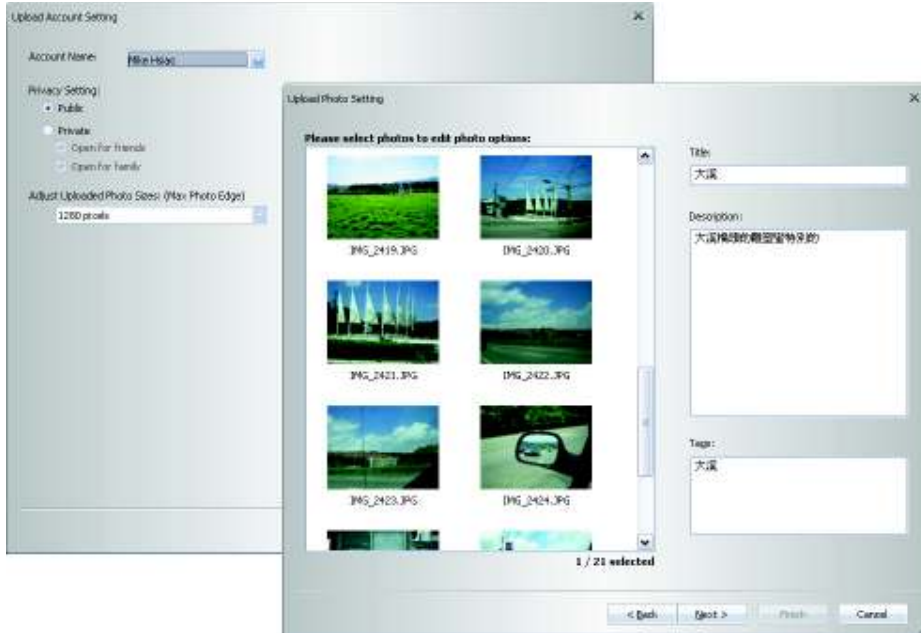
The screenshot displays a software interface with a tabbed menu at the top: Track List, Speed/Altitude View, Photo View, Photo List (selected), and Media List. Below the menu is a table listing photo attributes. The table has five columns: Photo Name, Date, Place Mark, Latitude, and Longitude. The row for SANY0085.JPG is highlighted. Below the table, there is a photo thumbnail and a detailed metadata table for the selected photo.

Photo Name	Date	Place Mark	Latitude	Longitude
SANY0073.JPG	6.9.2007 13:46:41	SANY0066.JPG	25.184352°	121.411850°
SANY0074.JPG	6.9.2007 13:47:35	SANY0066.JPG	25.184352°	121.411850°
SANY0075.JPG	6.9.2007 13:51:32	SANY0066.JPG	25.184352°	121.411850°
SANY0076.JPG	6.9.2007 14:04:44	SANY0076.JPG	25.179085°	121.408013°
SANY0077.JPG	6.9.2007 14:05:26	SANY0076.JPG	25.179085°	121.408013°
SANY0078.JPG	6.9.2007 14:05:45	SANY0076.JPG	25.179085°	121.408013°
SANY0079.JPG	6.9.2007 14:06:19	SANY0079.JPG	25.176698°	121.412258°
SANY0080.JPG	6.9.2007 14:06:27	SANY0079.JPG	25.176698°	121.412258°
SANY0081.JPG	6.9.2007 14:06:34	SANY0079.JPG	25.176698°	121.412258°
SANY0082.JPG	6.9.2007 14:11:12	SANY0082.JPG	25.171023°	121.426621°
SANY0083.JPG	6.9.2007 14:18:42	SANY0083.JPG	25.169559°	121.439062°
SANY0084.JPG	6.9.2007 14:27:04	SANY0084.JPG	25.161476°	121.431714°
SANY0085.JPG	6.9.2007 14:27:12	SANY0084.JPG	25.161476°	121.431714°
SANY0086.JPG	6.9.2007 14:27:21	SANY0084.JPG	25.161476°	121.431714°

Photo Name	SANY0085.JPG
Date/Time	6.9.2007 14:27:12
Make	SANYO Electric Co.,Ltd.
Model	C6
Flash Used	No
Focal Length	6 mm
Exposure Time	1/425 sec
Aperture	f/5.6
ISO Equivalent	50
Exposure Bias	0.0

Upload Photos to Flickr

Menu command “Photo” > “Upload Photos to Flickr...” will invoke upload wizard. Users can set “Title”, “description”, “Tag”, “Public or Private”, and “Upload photo size”.



If you want to upload geotagged photos directly on Flickr web site:

You have to turn on the following option. "Your Account">"Privacy & Permissions">"Import EXIF location data: Yes"

After the option is turned on, the uploaded photo will be put on map.

Go to Flickr > "You" > "Your map", you can browse your photos on the map.

Shift Photo Time

Menu command "Photo" -> "Shift photo time..." will invoke the shift photo time window. All the photo will be added (or subtracted) the specified time. The dates are saved in the Exif parts of Jpeg or Tiff file. After the shift, GPS Photo Tagger will automatically match the photo and track waypoints again. User can put more than 365 in days.

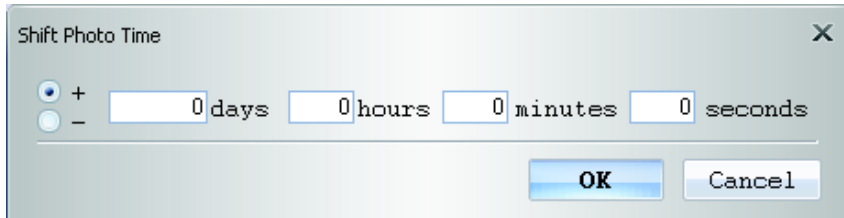
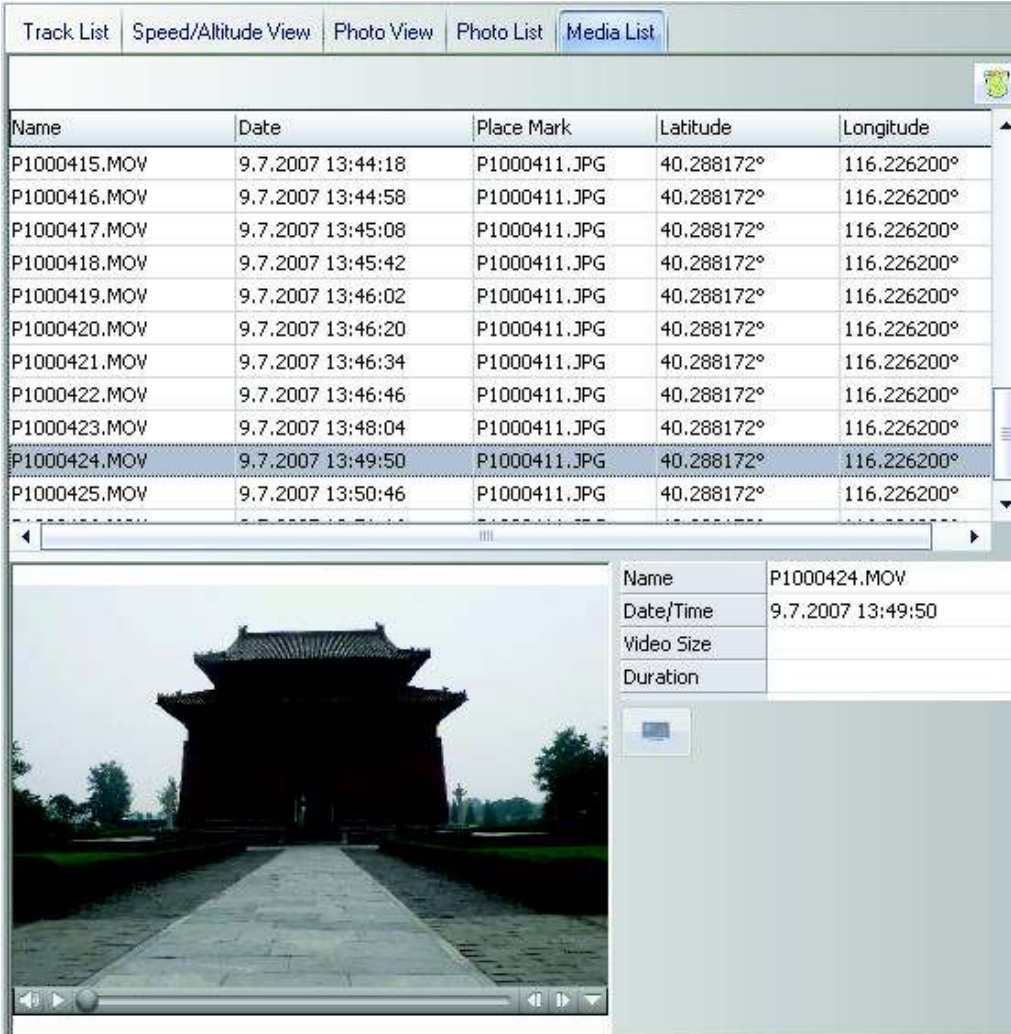


Photo Comments

Support multi-language comments. The comments will be uploaded to Flickr, packed in the kml file.

Media List View

Users can import not only photos. All other media files are allowed to be imported and tagged to tracks according to the file create times.



The screenshot displays a software interface with a 'Media List' tab selected. The list contains 11 rows of media files. The selected row is P1000424.MOV, which has a date of 9.7.2007 13:49:50 and a place mark of P1000411.JPG. Below the list, a video player shows a still image of a traditional Chinese gate. To the right of the video player is a metadata panel with the following information:

Name	P1000424.MOV
Date/Time	9.7.2007 13:49:50
Video Size	
Duration	

Google Earth Viewing

Command “File” -> “View in Google Earth” will invoke Google Earth to view the tracks and photos. Users have to install the Google earth.

<http://earth.google.com/>



Save As KMZ File

Menu command “File” -> “Export as Kml...” to save the tracks and photos in kmz file. You can import kmz file to Google Earth. You can also send kmz file to friends to share their trips with friends as long as they have installed Google Earth on their computers.

The picture size packed in the kmz file can be set in the options dialog. Menu command “Tools” -> “Options” > “Google Earth” > “Photo size in KMZ”.

Altitude Graph

Switch to “Altitude View” window will show the altitude graph. The waypoints with photos on it will be marked with red square. Moving cursor on red square will display the photo. You can pan left, pan right, zoom in, zoom out in the altitude graph.

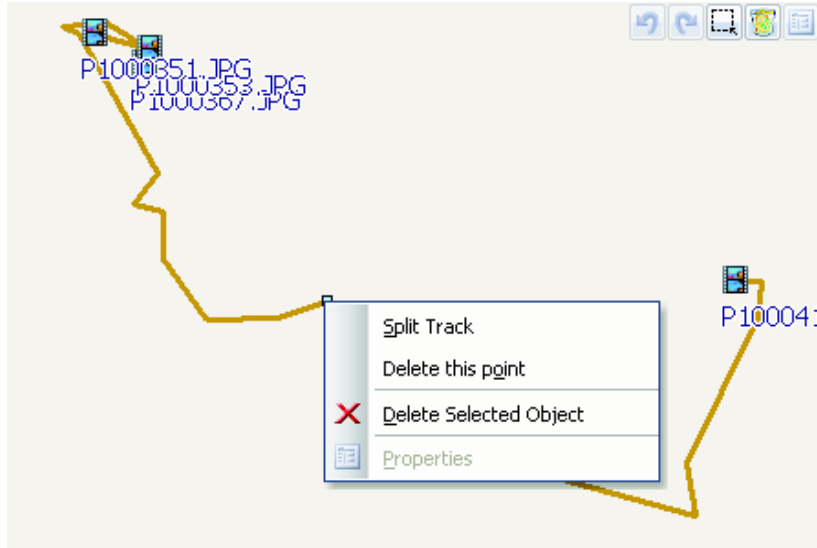
Speed graph

Switch to “Speed View” window will show the speed graph. The waypoints with photos on it will be marked with red square. Moving cursor on red square will display the photo. You can pan left, pan right, zoom in, zoom out in the altitude graph.

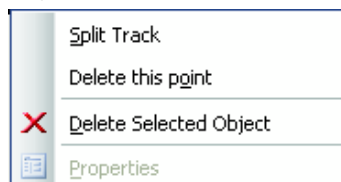


Track Editing

Switch to folder “Track Editor” on the left window. Move the cursor on the track will show the preselected waypoint time. Click on track to select the whole track.



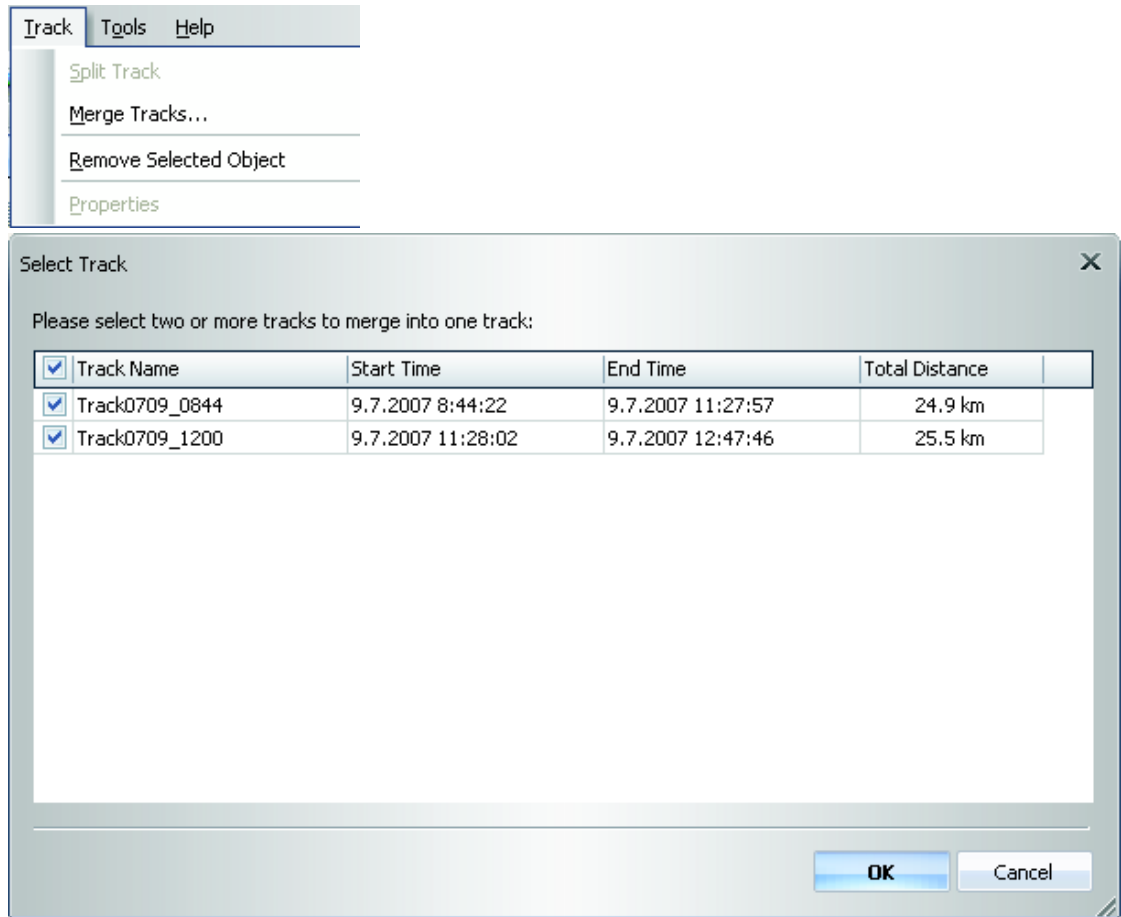
- Shift-Click multiple selections
Select one waypoint, and then shift-click on another waypoints. The waypoints between these two waypoints will all be selected.
- Ctrl-Click multiple selections
Ctrl-Click on waypoints will toggle the waypoints selections.
- Area selection
Click on “Area Selection” button, drag an rectangle area. All the waypoints and place marks in the rectangle area will be selected.
- Delete waypoints
Click on “Remove” button to remove the selected objects.
- Split tracks
Click on a waypoint, and click right mouse button. Select command “Split Track”.



- Merge tracks

Command “Track” > “Merge Tracks”.

Select the tracks. Press OK button.



- Undo/Redo

press “undo” “redo” buttons to undo/redo the edit actions. Multiple layers of undo/redo are supported.



Save and Open Project

Menu command “File” -> “Save project” will save the tracks and photo as a project file.

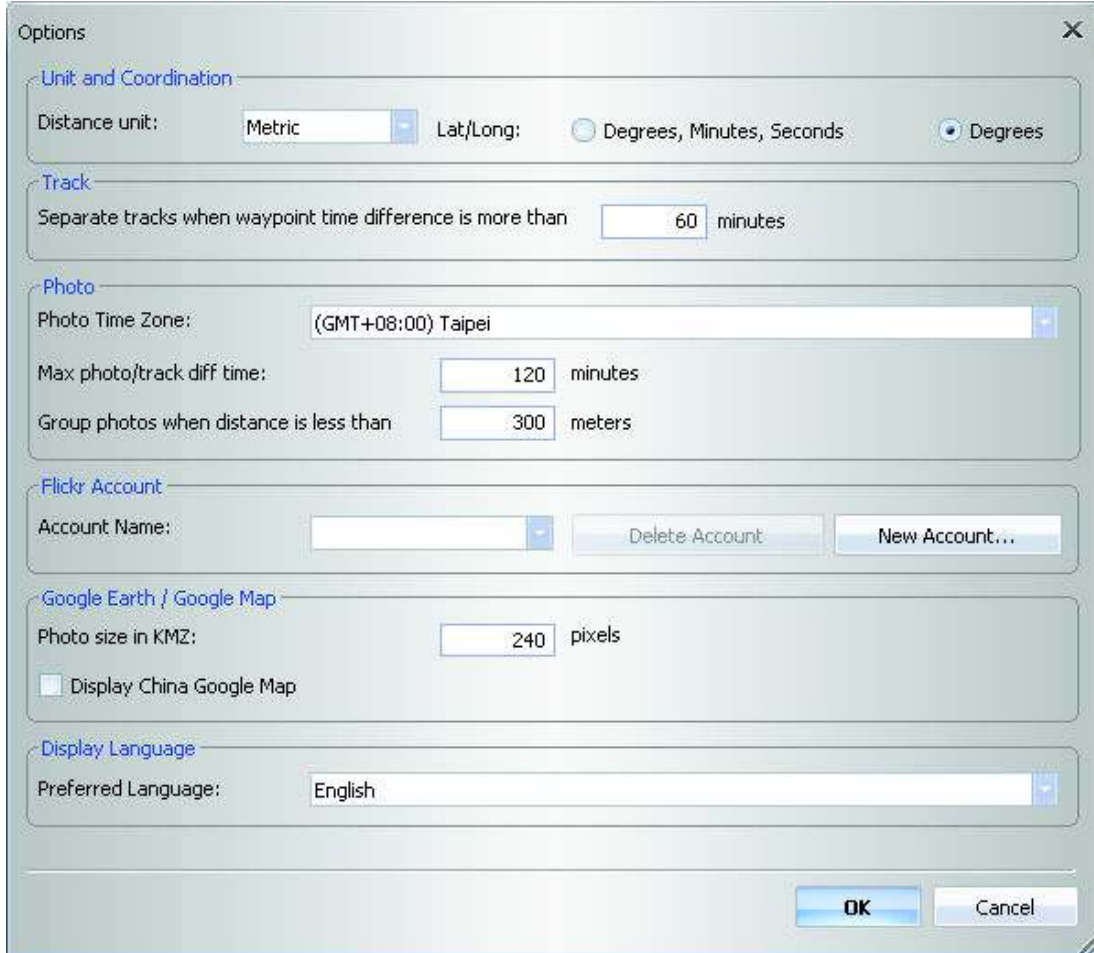
Menu command “File” -> “Open project...” will open the saved project. The project, photos, and photo comments will be restored after the project opened.

Time Zone Setting

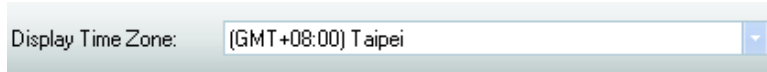
There are two time zone settings in “GPS Photo Tagger”. One is “Photo time zone”, the other is “Display time zone”. “Photo time zone” is set to the same time zone of your digital camera. The “Display time zone” is set for displaying purpose. For example, If you are an Englishman and you travel to United State. The “Photo time zone” should be set to “England” because your digital camera time zone is in England, and the display time zone should be set to “United State”.

The “Photo time zone” by default is set to the PC default value. In most of the case the default value is correct.

Menu command “Tools” -> “Options” will invoke the options dialog. You can set “Photo Time Zone” in the dialog.

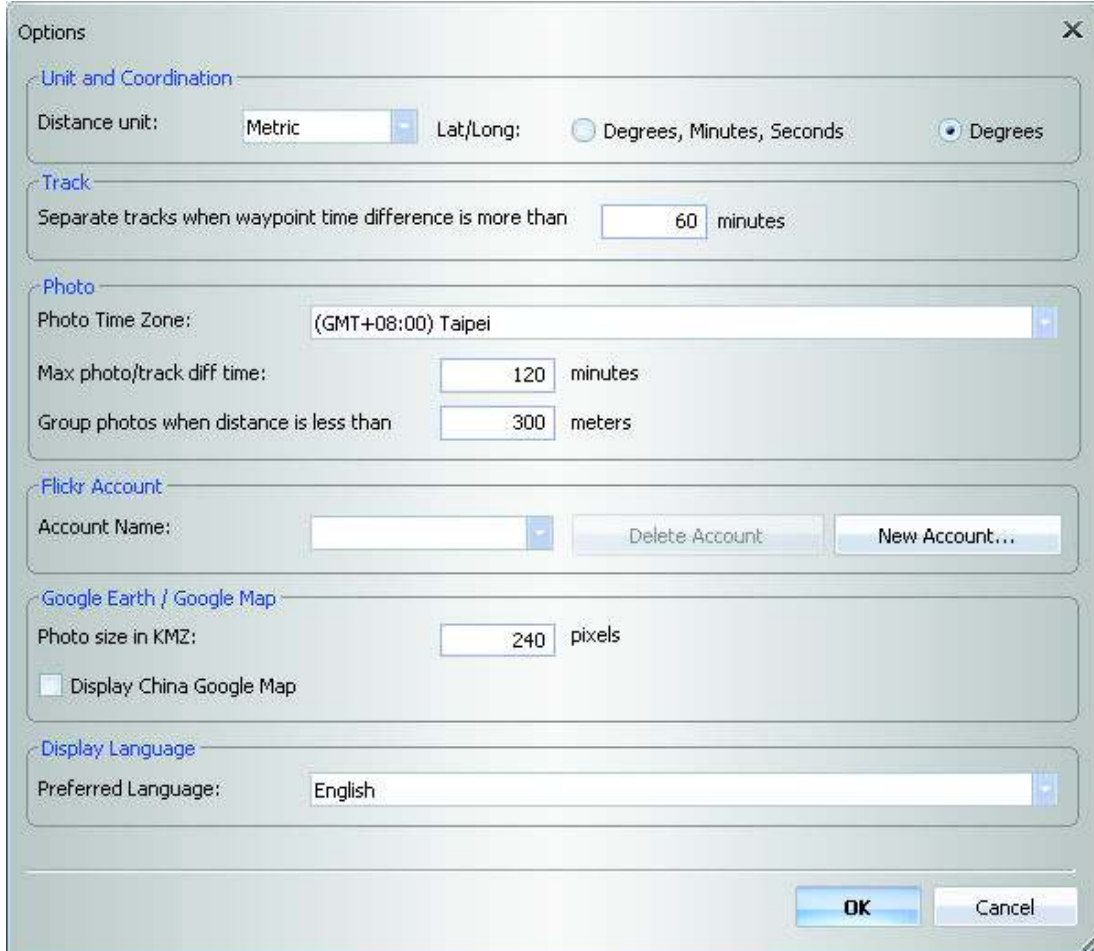


The “display time zone” setting is in the status bar.



Options

Menu command “Tools” > “Options...”



Distance unit:

Metric: Kilometer / meters will be used for displaying.

Imperial: Miles / feet will be used for displaying.

Lat/Long:

Degrees, minutes, seconds: Latitude and longitude will be display like 23°12'20"

Degrees: Latitude and longitude will be display like 23.22152°

Photo Time Zone:

The time zone of your digital camera time setting

Max photo/track diff time:

The setting is used to match photo and track waypoints. Photo Tagger will match photos and waypoints by time. It will find the nearest waypoint time to locate the photo. Yet, if the closest waypoint time is more than the "Max photo/track diff time", it will not match the photo.

Group Photos when distance is less than:

When two photos' distance is less than the setting, these two photos will be put in the same place mark.

Photo size in KMZ:

The size of the photos packed in the KMZ file. It is related to the command "File" > "Export As KMZ..."

Preferred Language:

Set the languages for menu, buttons and messages.