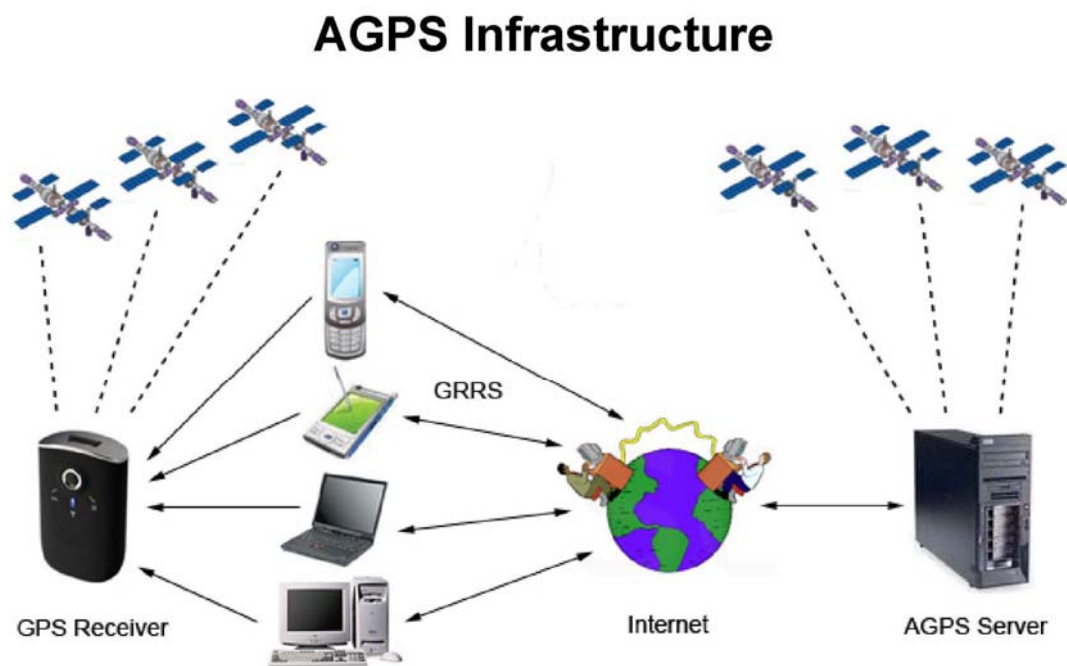


AGPS User's Manual (PC)

VENUS 5 series AGPS AGPS Infrastructure

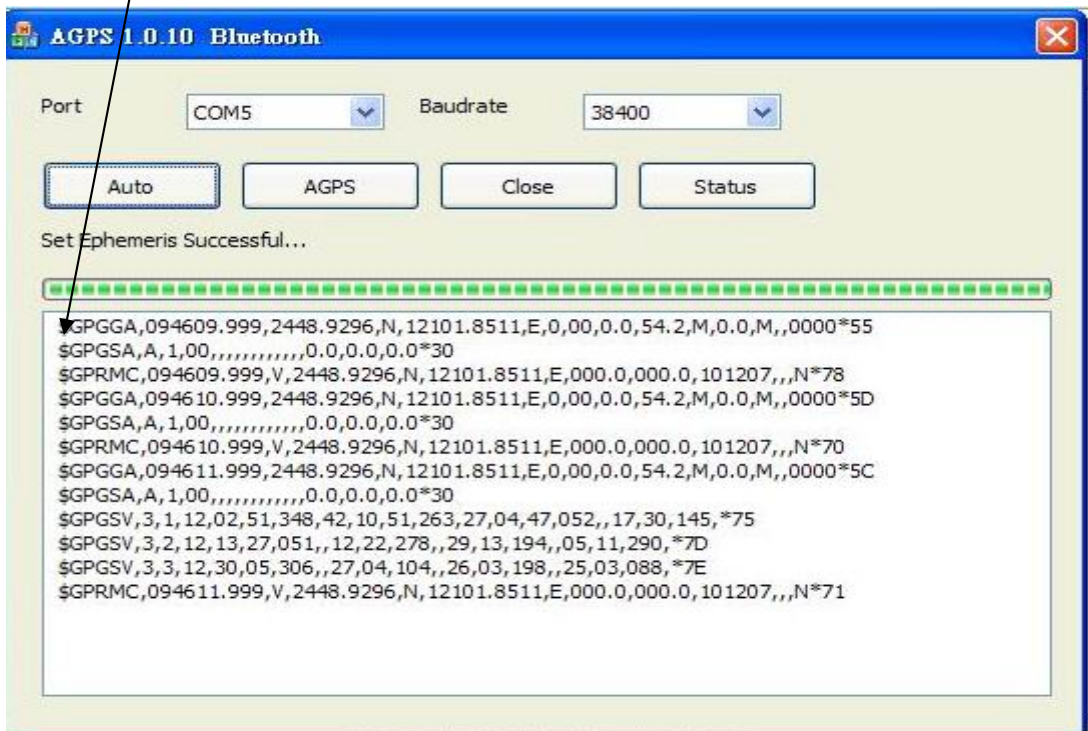
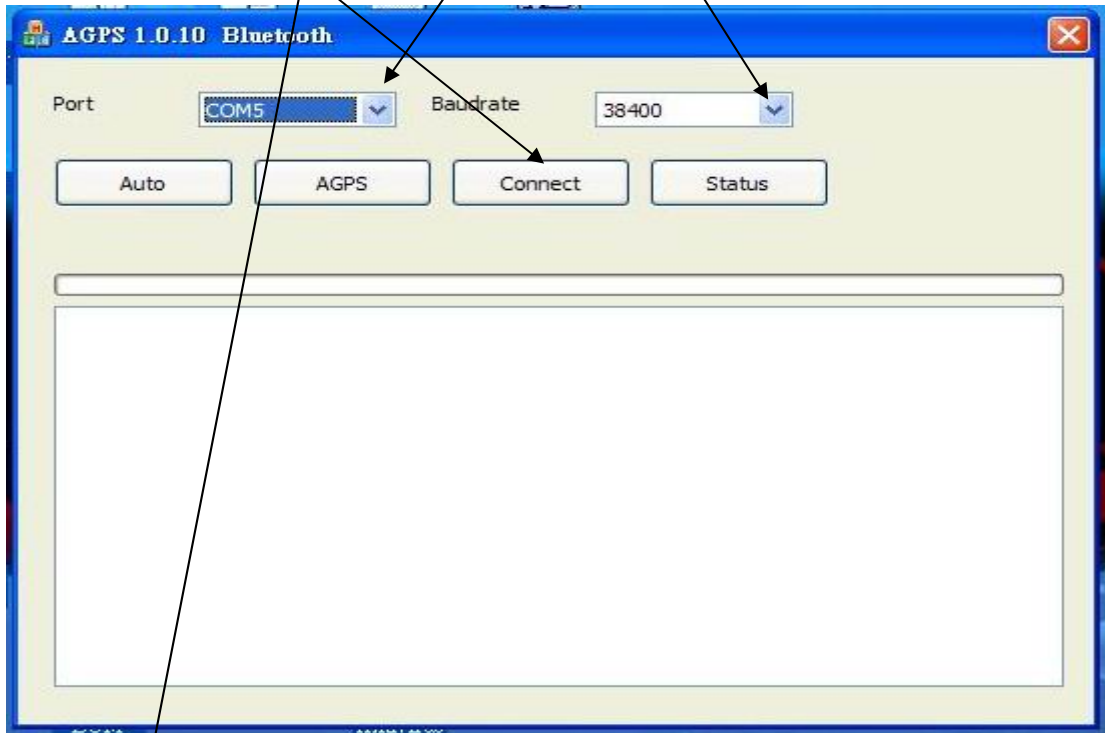


Preliminary, Proprietary and Confidential

Method A:

STEP 1: Connect your GPS device

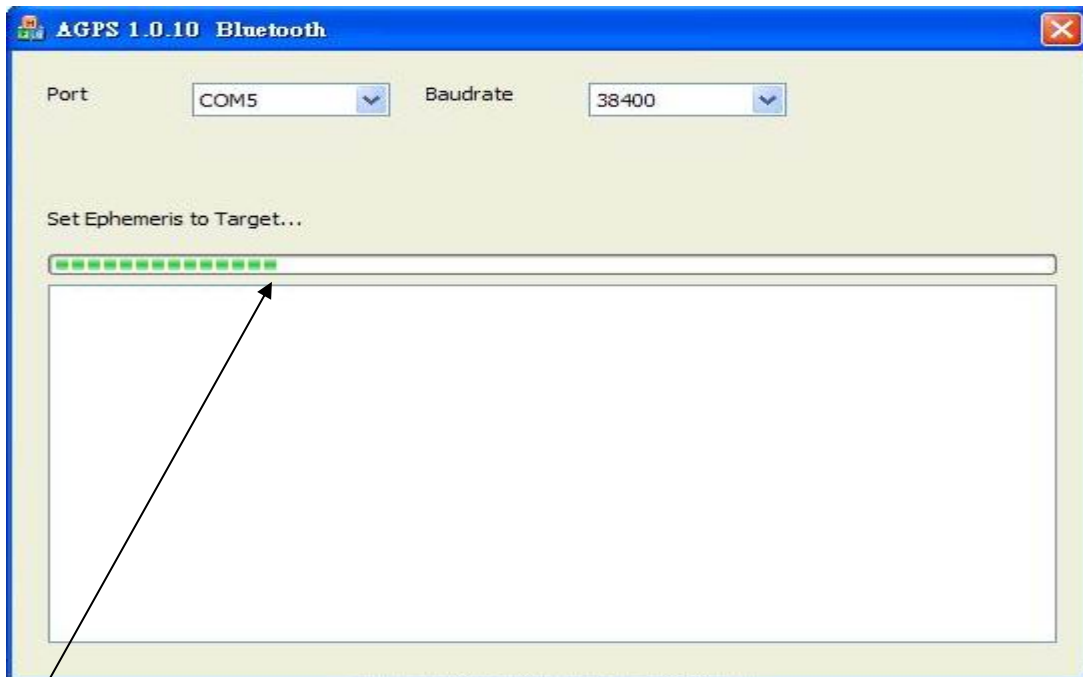
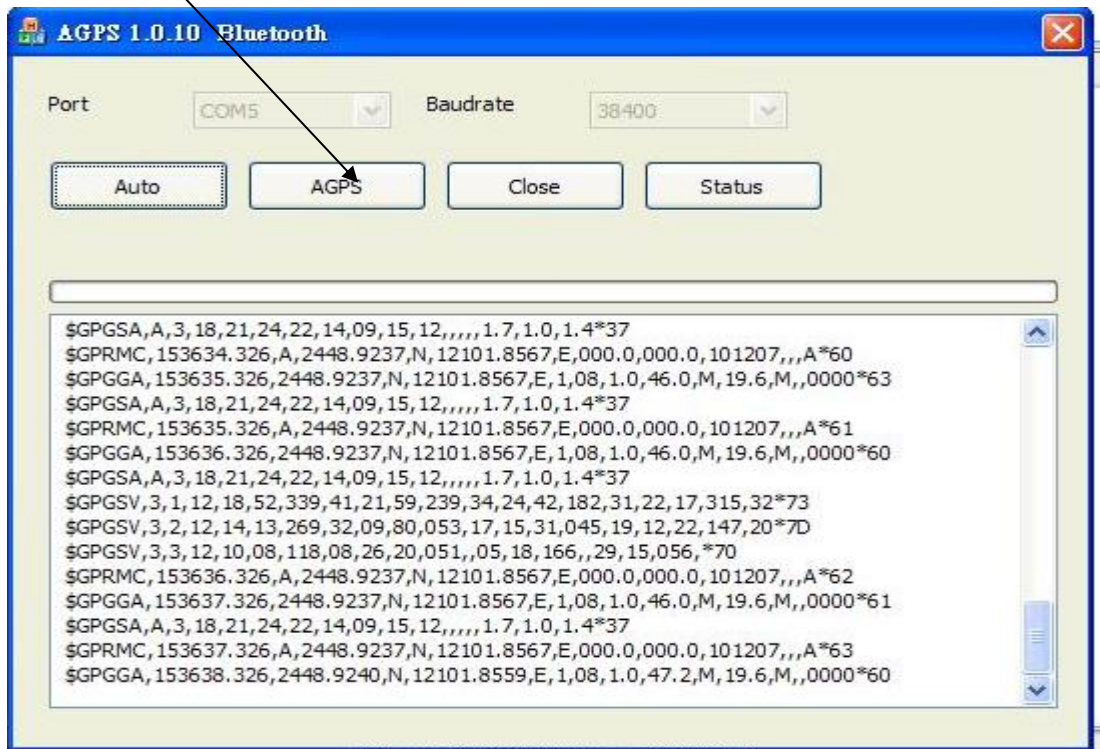
Connect your GPS device to PC, Choose Com Port and Baudrate
Click Connect See the NMEA Message



PS: Make sure your internet was connected

STEP 2: AGPS data download

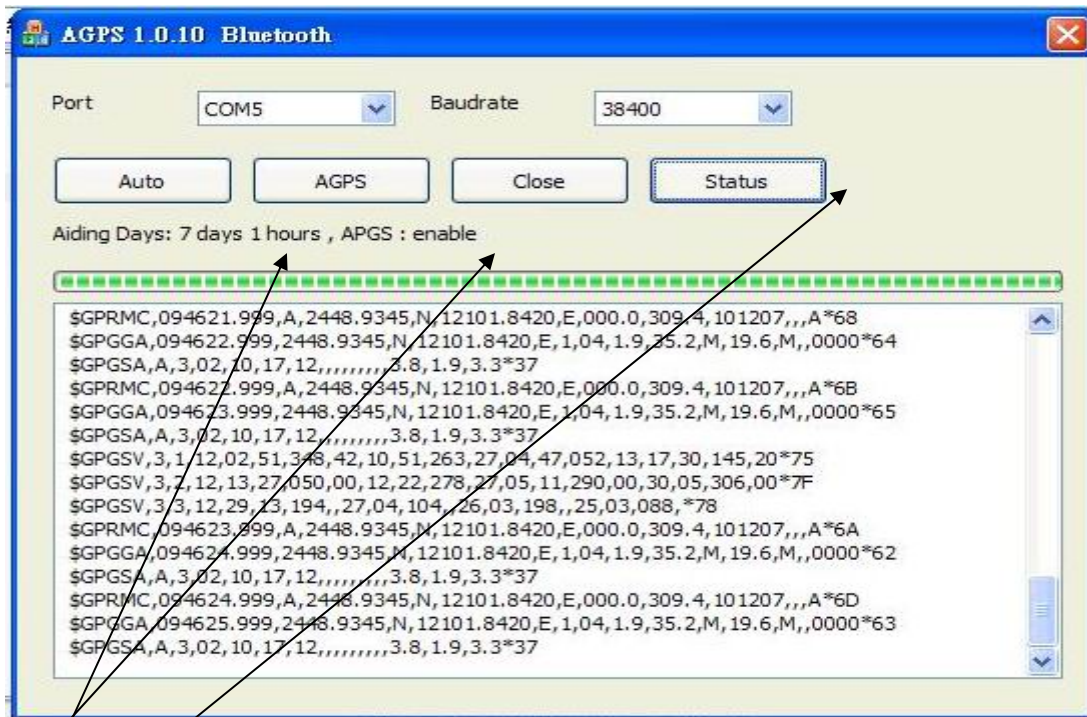
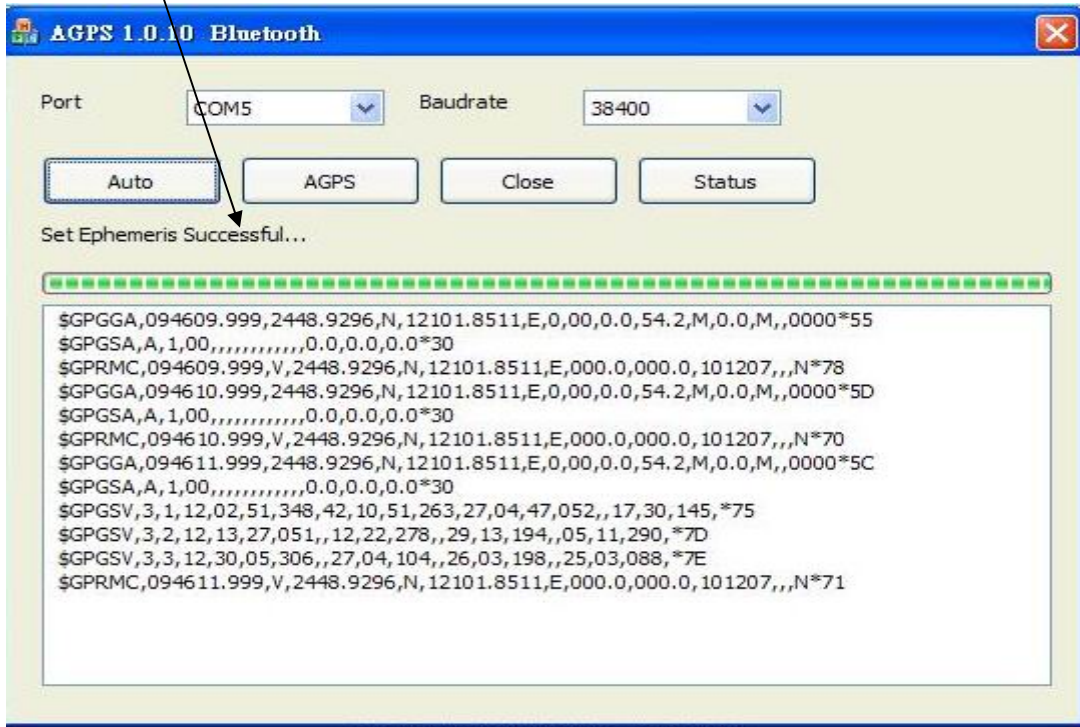
Choose AGPS Download



Automatic connect to internet and download to Flash memory

STEP 3: AGPS Download finish

Set Ephemeris Successful



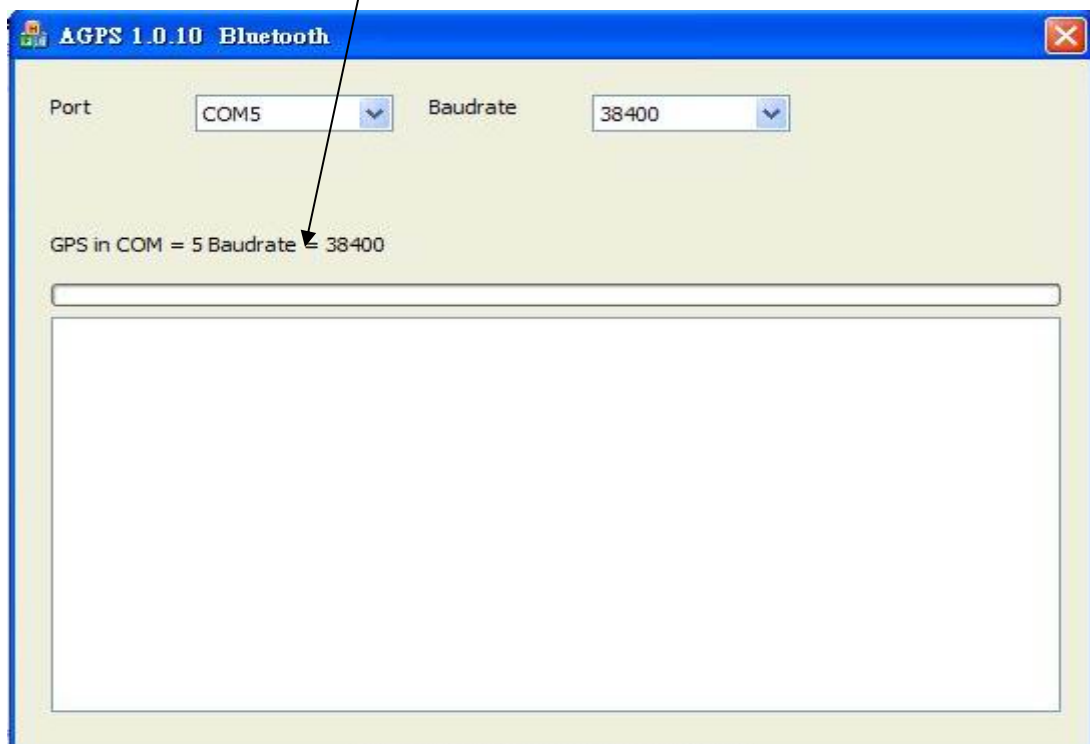
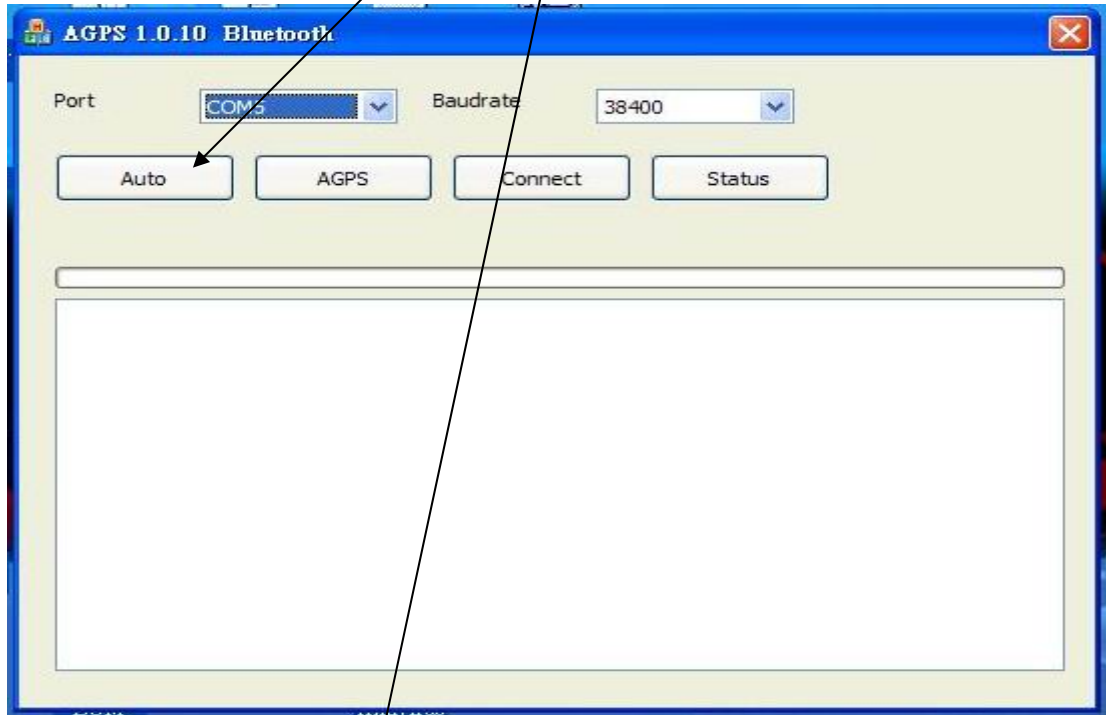
Option : AGPS Enable or Disable

Option : AGPS Status(7 days 1 hours)

Method B:

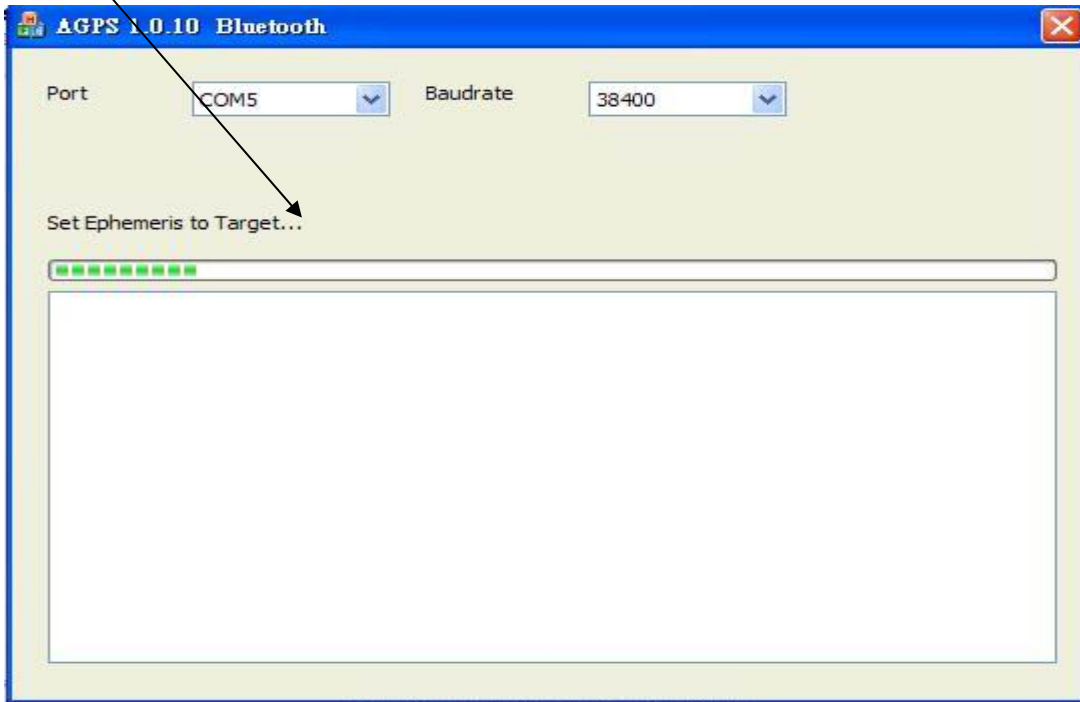
STEP 1: Connect your GPS device

Connect your GPS device to PC, Click Auto to scan Com Port

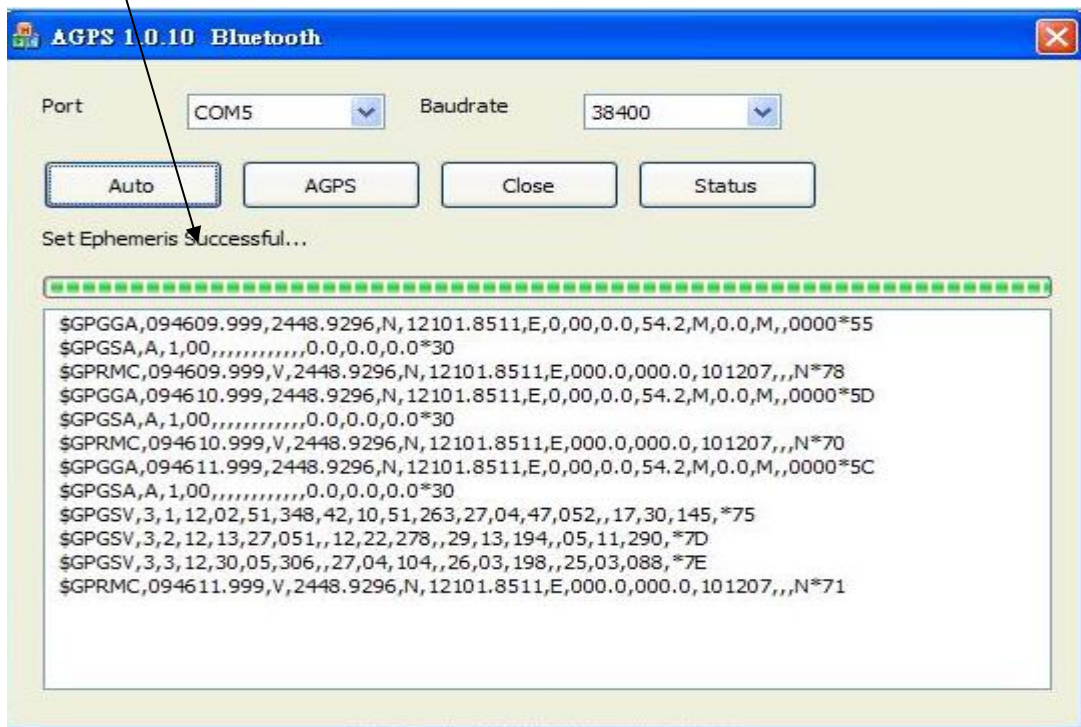


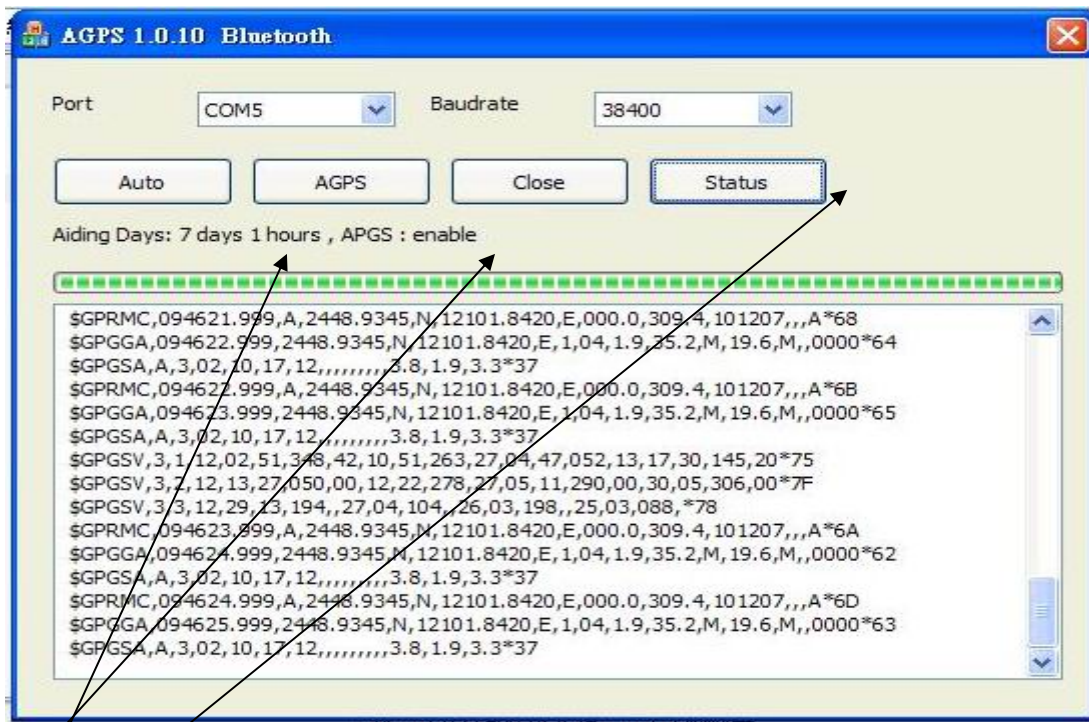
PS: Make sure your internet was connected

Automatic connect to internet and download to Flash memory



Set Ephemeris Successful





Option : AGPS Enable or Disable

Option : AGPS Status(7 days 1 hours)

Method C:

STEP 1: Connect your GPS device

Connect your GPS device to PC
Choose Com Port and Baudrate

Click Connect

See the NMEA Message

PS: Make sure your internet was connected

The screenshot shows the SkyTraq 0.4.4 software interface. The 'Com Port' is set to COM5 and the 'Baudrate' is 19200. The 'Connect' button is highlighted. The 'Message' pane shows NMEA messages including '\$GPRMC,1.00,28.00,1,249.7813,N,121.30,0.56,E,1.1,3.16,07,31.22,139.2,7.13,6*3A'. The 'Response' pane shows 'System Restart Successful...'. The 'COORDINATE' section displays WGS84_X, Y, Z, EAST, NORTH, and UP values. The 'Command' section includes buttons for 'Hot start', 'Warm start', 'Cold start', 'No Output', 'NMI-All101', 'Binary', 'Scan All', 'Scan Port', and 'Scan Baud'. The right side of the interface shows a 'Satellites View' map, a table of satellite data (Date, Time, HDOP, Longitude, Latitude, Speed, Altitude, Direction), an SNR bar chart, and a Scatter plot.

STEP 2: AGPS data download

Click AGPS menu

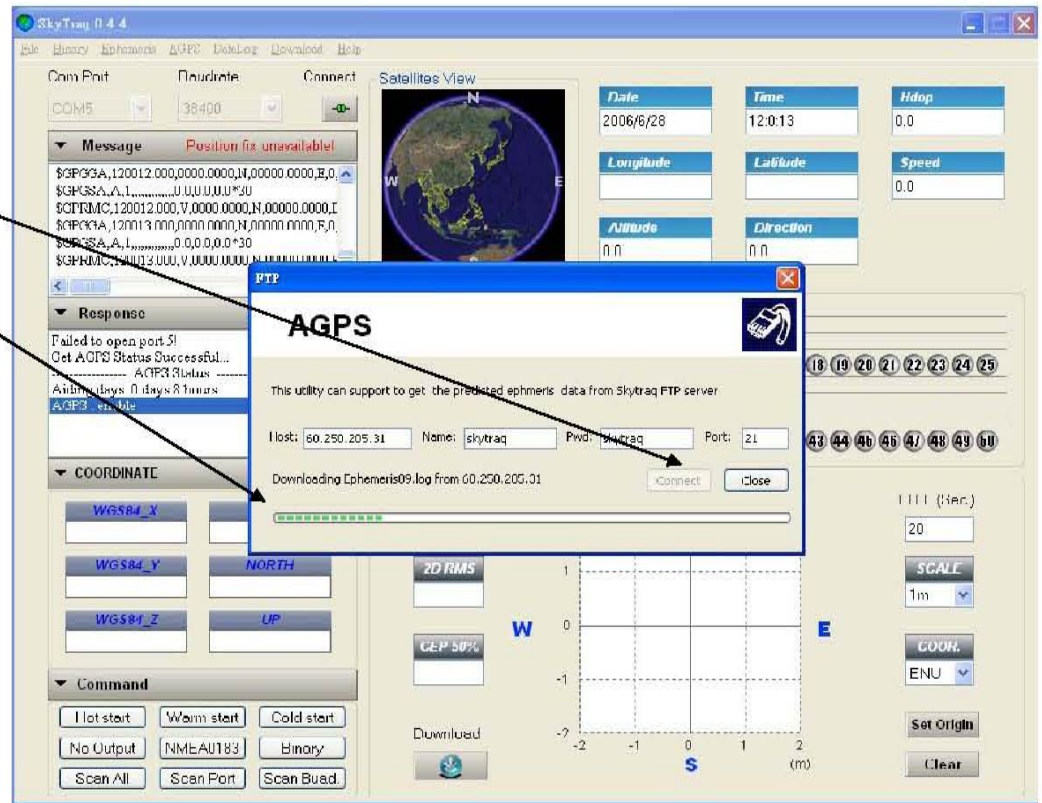
Choose AGPS Download

The screenshot shows the SkyTraq 0.4.4 software interface with the 'AGPS' menu open. The 'AGPS Download' option is selected. The 'Message' pane shows NMEA messages including '\$GPRMC,1.00759,0.01,A,2459.7911,N,121.30,0.8891,E,1.1,4.3,8*3B'. The 'Response' pane shows 'System Restart Successful', 'Received NACK...', and 'Received NACK...'. The 'COORDINATE' section displays WGS84_X, Y, Z, EAST, NORTH, and UP values. The 'Command' section includes buttons for 'Hot start', 'Warm start', 'Cold start', 'No Output', 'NMI-All101', 'Binary', 'Scan All', 'Scan Port', and 'Scan Baud'. The right side of the interface shows a 'Satellites View' map, a table of satellite data (Date, Time, HDOP, Longitude, Latitude, Speed, Altitude, Direction), an SNR bar chart, and a Scatter plot.

STEP 3: Automatic download

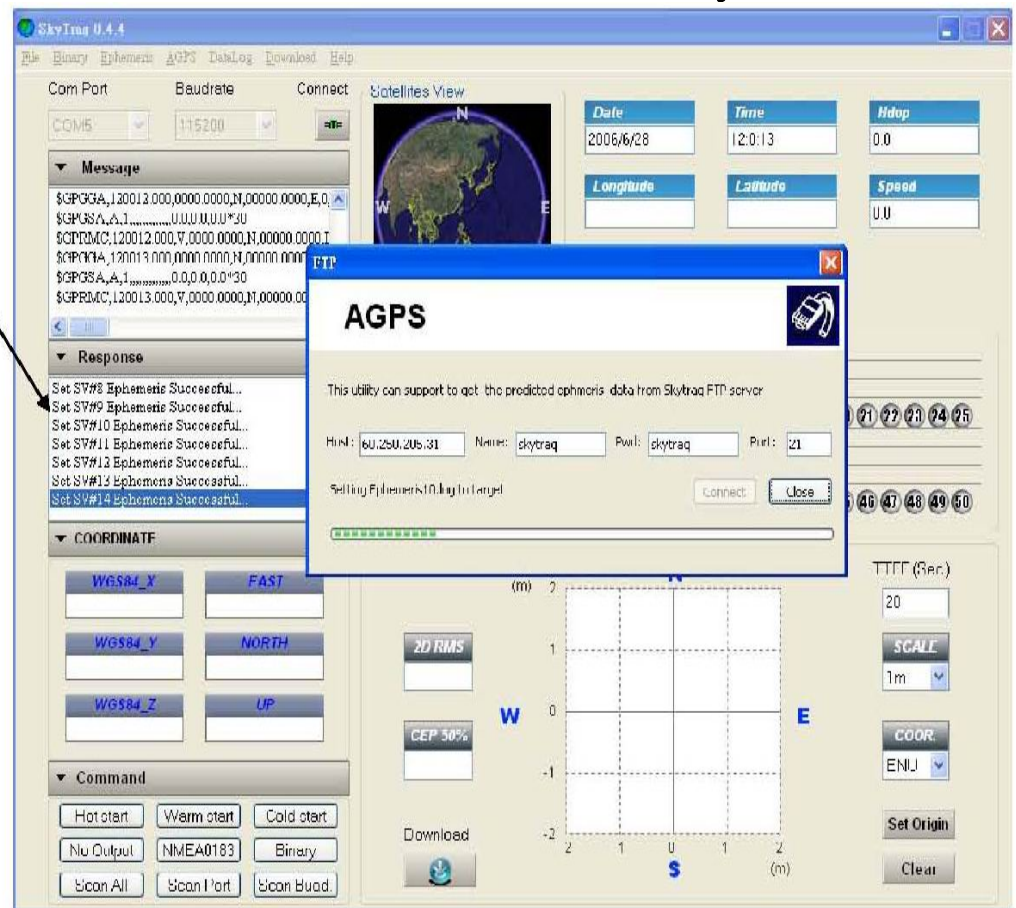
Click Connect

Automatic connect to internet and download



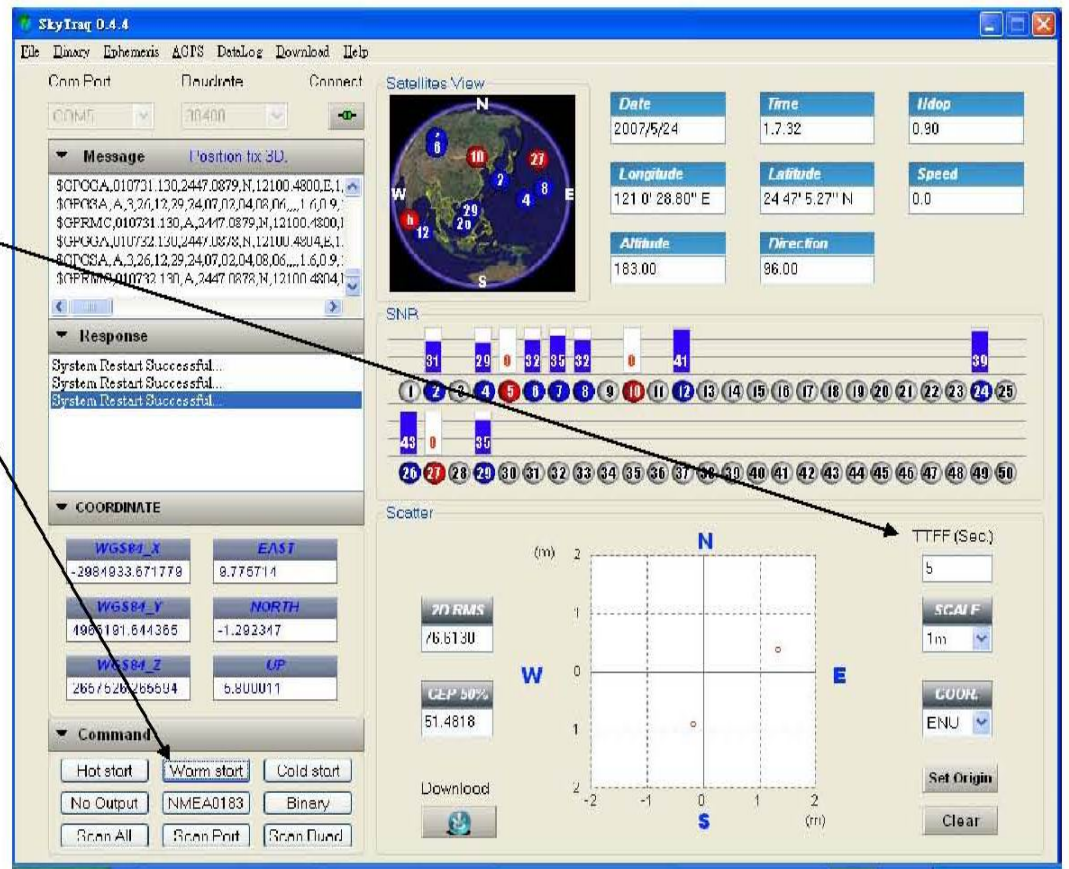
STEP 4: AGPS data download to GPS flash memory

Automatic download data to Flash memory

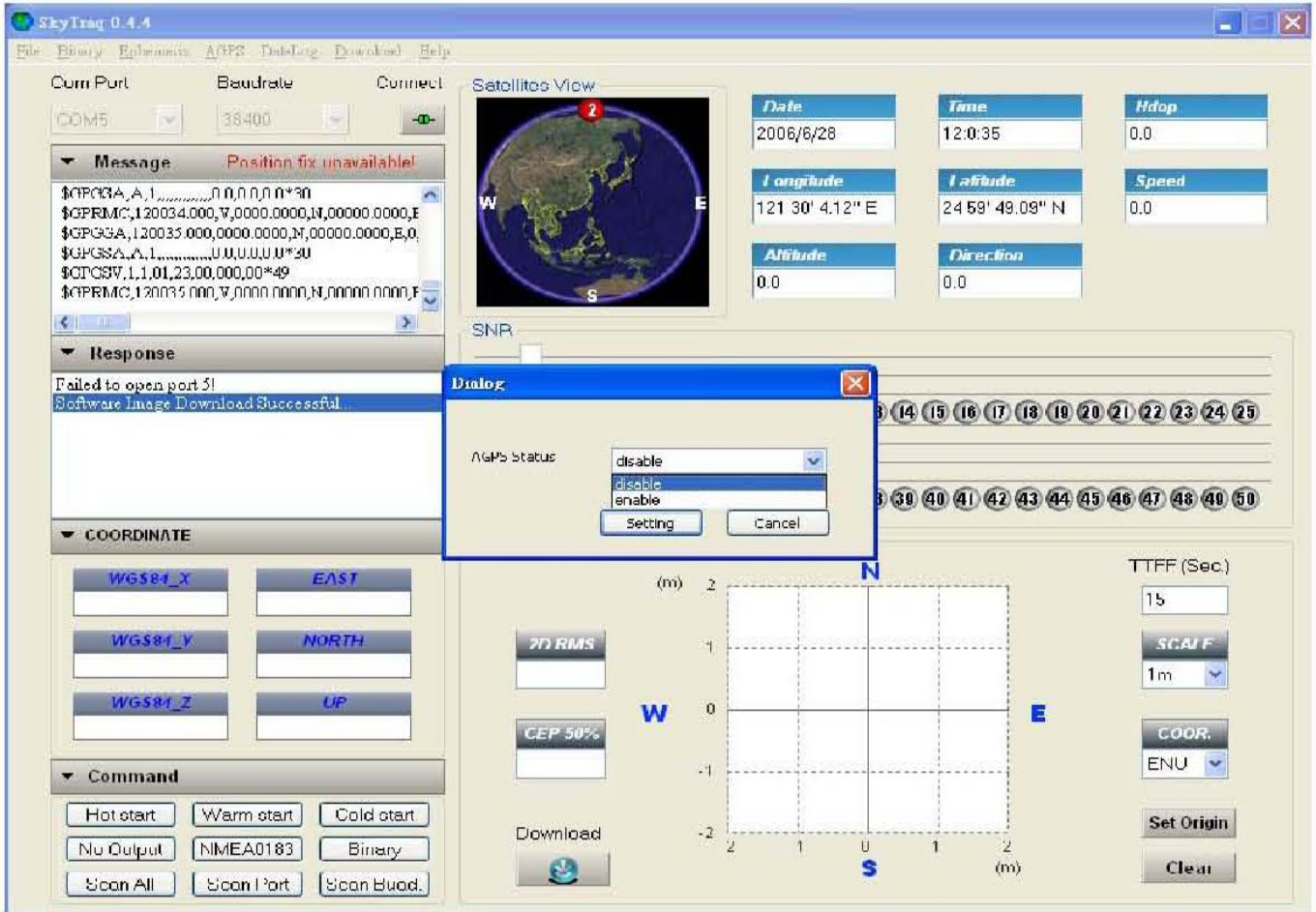


STEP 5: AGPS Download finish

Click Warm Start you will see it fix very quickly



Option : AGPS Enable or Disable



Option : AGPS Status

SkyTrag 0.4.4

File Binary Ephemeris AGPS DataLog Download Help

Com Port: COM5 Baudrate: 38400 Connect

Message Position fix unavailable!

```

$GPRGSA,120012.000,0.0000,0.0000,N,0.0000,0.0000,E,0,
$GPRSA,A,1,,,,,,,,,UU,UU,0*30
$GPRMTC,120012.000,V,0.0000,0.0000,N,0.0000,0.0000,E,0,
$GPRGSA,120013.000,0.0000,0.0000,N,0.0000,0.0000,E,0,
$GPRSA,A,1,,,,,,,,,0,0,0,0*30
$GPRMTC,120013.000,V,0.0000,0.0000,N,0.0000,0.0000,E,0
  
```

Response

```

Set SV#2/ Ephemeris Successful...
Set SV#30 Ephemeris Successful...
Set SV#31 Ephemeris Successful...
Get AGPS Status Successful...
----- AGPS Status -----
Aiding days: 6 days 8 hours
AGPS - enable
  
```

COORDINATE

WGS84_X	EAST
WGS84_Y	NORTH
WGS84_Z	UP


Command

Hot start Warm start Cold start

No Output NMEA0183 Binary

Scan All Scan Port Scan Baud.

Satellites View



Date	Time	Hdop
2006/6/28	12:0:13	0.0
Longitude	Latitude	Speed
		UU
Altitude	Direction	
0.0	0.0	

SNR

1 2 3 4 5 6 7 8 9 10 11 12 13 14 15 16 17 18 19 20 21 22 23 24 25

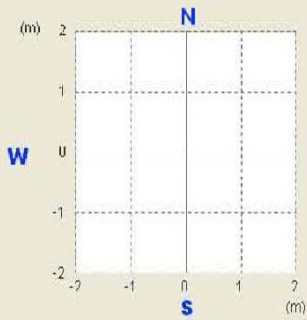
26 27 28 29 30 31 32 33 34 35 36 37 38 39 40 41 42 43 44 45 46 47 48 49 50

Scaler

7D RMS

CEP 50%

Download



TTFF (Sec) 32

SCALE 1m

COORD. ENU

Set Origin

Clear

6 days ,8 hours

